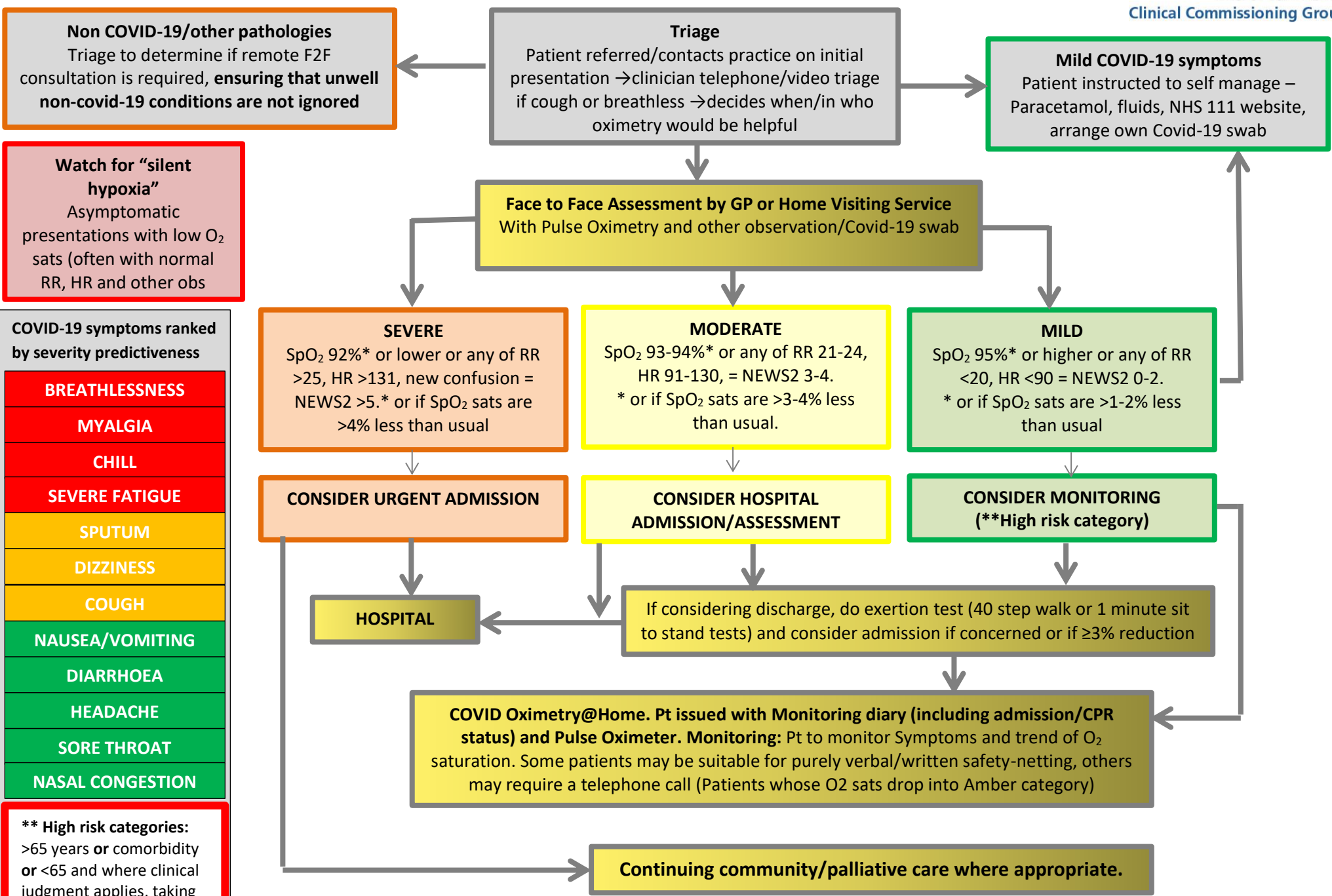


### Adult Primary Care Covid-19 Assessment



**Watch for “silent hypoxia”**  
Asymptomatic presentations with low O<sub>2</sub> sats (often with normal RR, HR and other obs)

**COVID-19 symptoms ranked by severity predictiveness**

- BREATHLESSNESS
- MYALGIA
- CHILL
- SEVERE FATIGUE
- SPUTUM
- DIZZINESS
- COUGH
- NAUSEA/VOMITING
- DIARRHOEA
- HEADACHE
- SORE THROAT
- NASAL CONGESTION

**\*\* High risk categories:**  
>65 years or comorbidity or <65 and where clinical judgment applies, taking into account COVID risk factors

# The NEWS2 Scoring System

Physiological parameter	Score						
	3	2	1	0	1	2	3
Respiration rate (per minute)	≤8		9–11	12–20		21–24	≥25
SpO <sub>2</sub> Scale 1 (%)	≤91	92–93	94–95	≥96			
SpO <sub>2</sub> Scale 2 (%)	≤83	84–85	86–87	88–92 ≥93 on air	93–94 on oxygen	95–96 on oxygen	≥97 on oxygen
Air or oxygen?		Oxygen		Air			
Systolic blood pressure (mmHg)	≤90	91–100	101–110	111–219			≥220
Pulse (per minute)	≤40		41–50	51–90	91–110	111–130	≥131
Consciousness				Alert			CVPU
Temperature (°C)	≤35.0		35.1–36.0	36.1–38.0	38.1–39.0	≥39.1	

Reproduced from: Royal College of Physicians. *National Early Warning Score (NEWS) 2: Standardising the assessment of acute-illness severity in the NHS*. Updated report of a working party. London: RCP, 2017.