

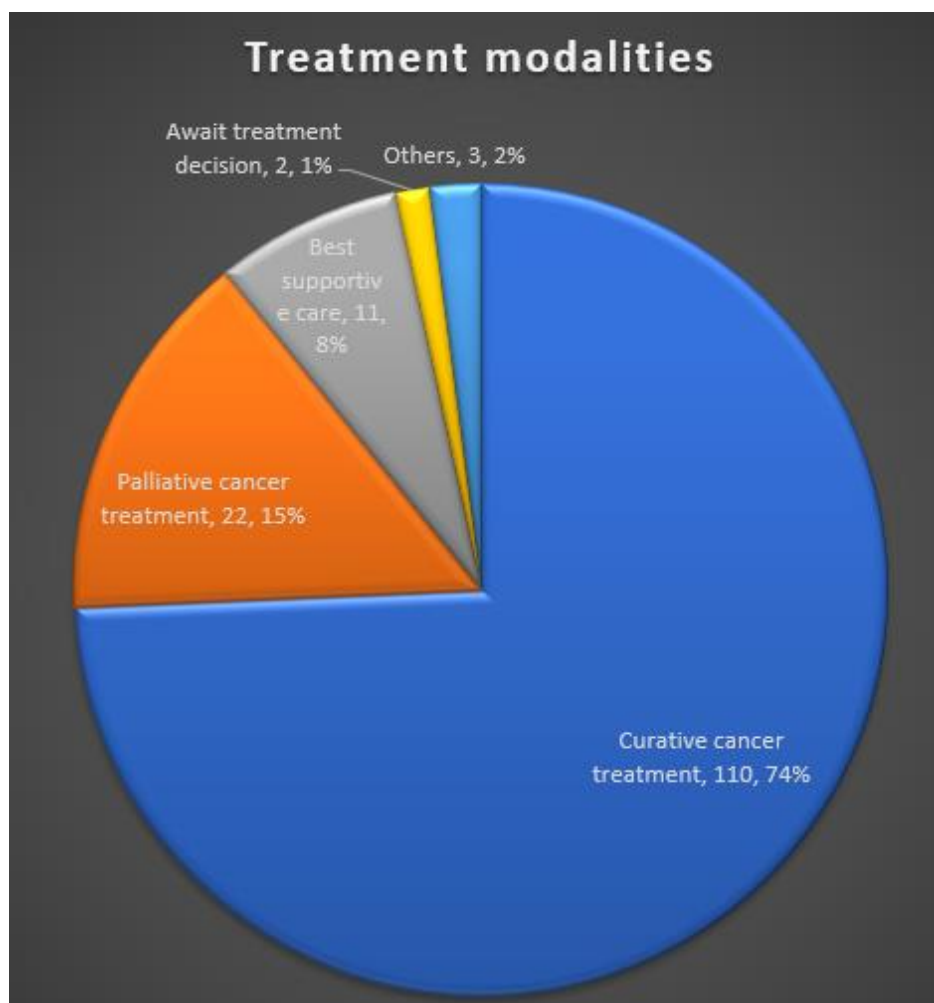
## The Rotherham Targeted Lung Health Check Programme is underway

The aim of this information pack is to provide your practice with information and guidance about the NHS Targeted Lung Health Check (TLHC) Programme. Please refer to the accompanying information including the FAQ for more details.

The TLHC Programme is a ground-breaking, flagship programme of work in England which will help deliver the NHS Long-Term Plan ambition to improve early diagnosis and survival rates for those diagnosed with cancer by diagnosing three out of four people with cancer at an early stage by 2028.

The Rotherham TLHC programme is underway as part of a joint and staggered roll out with Barnsley between autumn 2022 and spring 2024. The primary aim of the programme is to reduce mortality from lung cancer by finding it earlier when curative treatment is an option. A broader, secondary objective is to promote lung health and reduce inequalities in lung health and cancer outcomes. So far, in Doncaster, 193 cancers have been found, of which 148 were lung cancers. Of these 148 lung cancers, 75% were found at an early stage and 74% of these patients were suitable for curative treatment, thus significantly changing the conversations DBTH lung physicians are having with patients and their families.

Fig 1 DBTH Treatment Modalities 27.01.23 Position



The TLHC programme could help improve lung cancer survival rates across the borough, with a recent study showing that checks such as these can potentially pick up changes earlier and reduce lung cancer deaths by around 26% in men and 40% in women.

Working with NHS organisations in Rotherham, Alliance Medical, Ashfield Engage, part of UDG Healthcare Plc, and Telemedicine Clinic (TMC), are providing the new service, ***encouraging almost 26,000 people in the town to take up the invitation.***

- For **service issues** or **general patient queries further to receipt of a letter:**

Contact Ashfield Engage on 01302 495145

- For **commissioning issues** or **queries:**

Contact the TLHC programme team on:

[syicb-doncaster.sybtlhc@nhs.net](mailto:syicb-doncaster.sybtlhc@nhs.net)

### Eligibility criteria:

The programme gets its name from the fact that it targets adults aged 55-74 who have ever smoked (current and ex-smokers), because the chance of developing lung cancer increases with age and smoking. **People meeting these criteria will be invited by letter** for a lung health check assessment (based on smoking status as recorded on their GP record). Personalised lung cancer risk scores will be calculated for every invited participant who attends the Lung Health Check, and **those at high risk will be offered a low dose CT scan**. The eligible list will be extracted from GP Practice clinical systems using a TLHC Patient Search option within EMIS or SystemOne. Only the agreed dataset on the agreed cohort of patients will be exported.

### Exclusion Criteria

- Lung cancer in the previous five years
- Metastatic cancer (excluding metastatic prostate cancer)
- Registered on the Palliative Care Register
- Poor physical fitness, such that treatment with curative intent would be contra-indicated: this can be assessed at face-to-face appointments and may require a second opinion or advice from the lung cancer Screening Review Meeting
- Lymphoma (added to exclusion criteria in May 2021)
- Mesothelioma (added to the exclusion criteria in May 2021)

### How are patients invited and enrolled onto the programme?

Eligible patients will be sent a letter inviting them for a telephone lung health check.

Unfortunately, we are unable to identify individuals with ESL *before* the invitation process starts, but the invitation letter and the patient information booklet have been translated into a range of languages available to download from the [TLHC webpage](#).

Languages currently available include:

- Arabic
- Bengali
- Chinese
- Czech
- Gujarati
- Indian Punjabi
- Polish
- Romanian
- Slovak
- Somali
- Urdu

For patients with additional needs, reasonable changes will be made to the approach to ensure the service is accessible to all. This includes interpreting service provisions for those without adequate English, and the use of [Relay](#) for those with a hearing impairment. Individuals identified as having a Learning Disability will be sent an 'Easy Read' version of the patient information booklet, rather than a standard version.

If the patient decides to proceed, they will receive a call at an agreed appointment time with a non-clinical scheduler. This is essentially a triage call to determine if the individual is indeed eligible for the programme. This step is necessary due to data quality issues with the patient lists sent by practices and is difficult to avoid. In Doncaster, approximately 10% of patients contacted denied having smoked so were offboarded at that point.

### **What happens during a Lung Health Check?**

During the telephone lung health check, individuals will be asked questions about their health history, lifestyle, and family history, and a risk score will be calculated using the risk prediction models PLCO2021 and LLPv2 ([click here for protocol](#)). Patients who have a low lung cancer risk score will receive general advice on lung health and healthy living.

Current smokers will receive a brief intervention on smoking cessation and be referred to community smoking cessation services if agreeable. The initial intervention will be offered by our provider as part of the local TLHC pathway. The patient will then be picked up by the local stop smoking service [Get Healthy Rotherham](#) (see p10 of the patient information booklet for contact details).

The GP will receive a letter informing them that a Lung Health Check has taken place and of the outcome, including whether the patient will need an initial scan. Patients whose personal lung cancer risk score is above the validated threshold will be offered a low dose CT scan at an Alliance Medical mobile unit in your area. The TLHC Nurse will

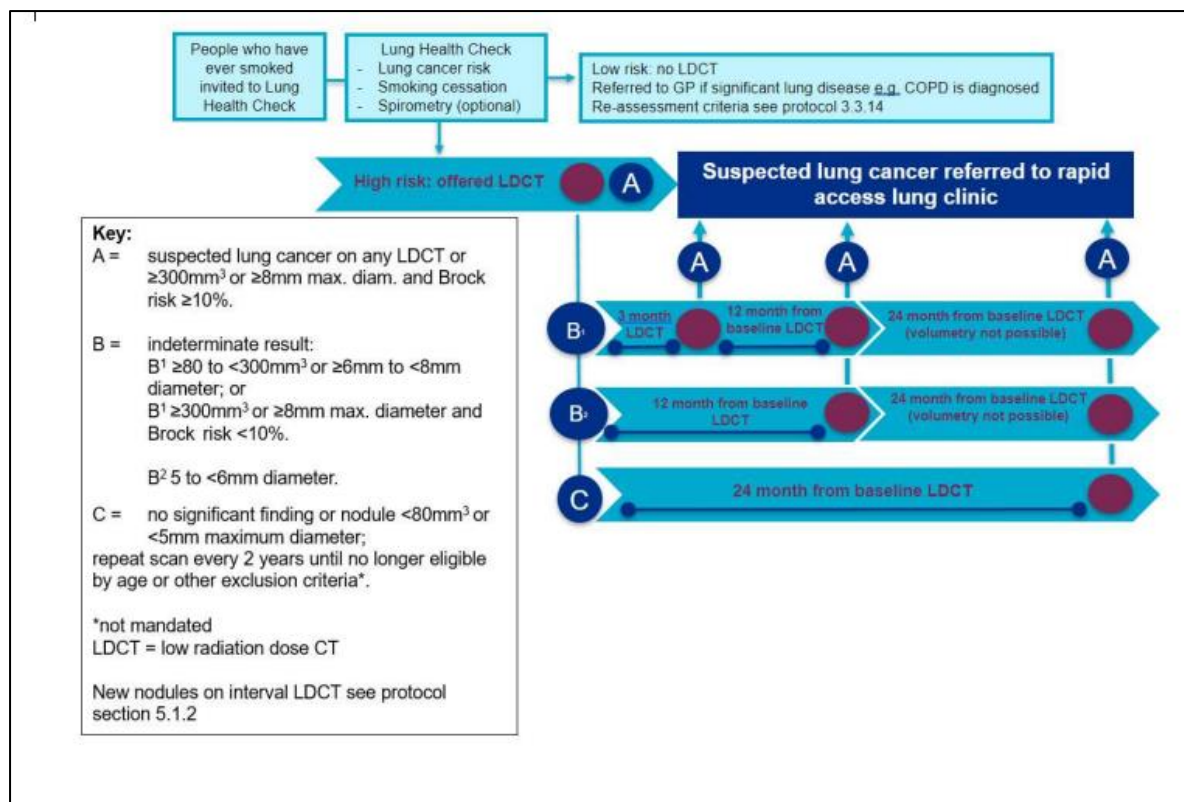
discuss the risks and benefits of having the CT scan and will book the appointment for the CT scan, should the patient consent to proceed.

and benefits of having the CT scan and will book the appointment for the CT scan should the patient consent to proceed.

Some patients who meet the risk threshold might not be offered a low-dose CT scan. This will be explained to the patient and the GP will be informed. Reasons for not being offered a scan include:

- They are unable to lie flat
- They are unable to transfer onto the CT scanning bed without support, or with the support of somebody who attends the scan with them
- They weigh more than 200kg/31.5 stones
- They do not have capacity to consent to the scan (standard criteria for assessing capacity apply)

Fig 2. High Level Participant Journey from the Standard Protocol page 15



## Where and when will the CT scans take place?

Fig 3. Alliance Medical Mobile Trucks at Currys in Doncaster September 2022



Low-dose CT scans will take place in a specially designed mobile CT scanner unit run by our provider Alliance Medical. Scanners will be situated in community locations, e.g., supermarket car parks and leisure centres, to maximise accessibility and encourage attendance. The TLHC CT scan will be reported by TMC and the CT scan results will be reviewed weekly by the TLHC Screening MDT team. Depending on the result of the initial CT scan, patients will be referred to secondary care lung cancer services or invited to return for further CT scans, at three, 12, or 24 months. Ashfield will organise all the bookings and patient communications related to the initial scan and follow-up scans.

### Roll out across Rotherham:

Rotherham was chosen to participate in the Lung Health Checks due to the number of people in the area that have ever smoked, deprivation levels, and high lung cancer mortality rates. This is a joined roll out with Barnsley and started in Rotherham in October 2022. The Barnsley programme launched in March 2023, and the joint rollout will continue until March 2024. A second phase will take place to allow for any further scans and follow-up appointments.

Patients from Rotherham Central North PCN were the first to be invited for a telephone Lung Health Check and those at high risk were offered a LDCT scan at Parkgate Retail World, where the scanner was first situated. Please note, invitations are sent in batches from oldest to youngest, rather than by practice, so that those approaching 75 years of age don't miss out.

This table helps to explain the **very approximate** timescales for roll out and are subject to change.

PCN	First Scans	First Invitations
Rotherham Central North	w/c 21/11/2022	w/c 24/10/22 – Nov 2022
Wentworth 1	w/c 20/12/2022	w/c 14/11/22 – Jan 2023
Market Surgery, Wath	w/c 20/03/2023	March 2023
Health Village/Dearne Valley	w/c 03/06/2023	May-June 2023
Maltby/Wickersley	w/c 21/08/2023	July-Sept 2023
Rother Valley South	w/c 31/10/2023	Sept-Oct 2023
Raven	w/c 18/12/2023	Nov 2023-Jan 2024

### **The role of the GP practice:**

This programme is a great opportunity to improve lung cancer survival for the local population. GP and health professional endorsement has a positive impact on uptake of TLHC and plays a vital role in the promotion of the SYB TLHC programme. We need your help to raise awareness of the programme and educate the public on the importance of detecting lung cancer early. TLHC uptake rates are currently low, with an average of 38% of people taking up their invitation for a lung health check. Survey data collected from non-attendees at earlier pilots showed the most common reason given for non-attendance is people felt they “did not need or see the benefit of a Lung Health Check” or thought they “had been invited by mistake”.

Ways in which GPs can support the programme include:

- Opportunistic discussion with patients who are eligible for the TLHC programme to maximise the teachable moment and help them make an informed decision about attending an appointment when invited
- Accurate coding of the smoking status on patients’ records. An accurate smoking status is essential to make sure invitations are sent to the correct patients
- Direct eligible patients to more information on the [TLHC webpage](#) – an animation and a patient film amongst other things
- Signpost patients to local smoking cessation services (as appropriate) and national charity pages regarding lung health

Ways in which the practice manager and reception team can support the programme include:

- Displaying banners and posters if available and utilising the TV screens to help raise awareness of the programme
- Providing the public with reassurance and the relevant information if you receive calls with questions (see FAQ document)
- In consultation with Place and Ashfield Engage colleagues, practices may want to consider sending a text message at the beginning of the programme to reassure patients that the invitation isn’t a scam. Text messages may also be sent as part of a coordinated ‘mop up’ at the end of the programme, to offer non-attendees one last chance to participate, time permitting

### **Incidental findings:**

Please refer to the separate ‘Rotherham Guide to Dealing with Lung Health Check Results’.

**Please see pp7-9 for details of various assets which have been developed for your use and p9 for useful contacts**

## TLHC Programme Assets

### TLHC QR Code:

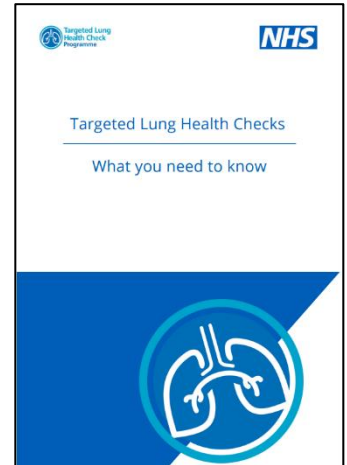
For patients who are digitally savvy, a QR code has been developed. By scanning this on their mobile phone, the individual is taken straight to the TLHC page on the SYB Cancer Alliance website, where they can find lots of additional information:



### Patient Information Booklet:

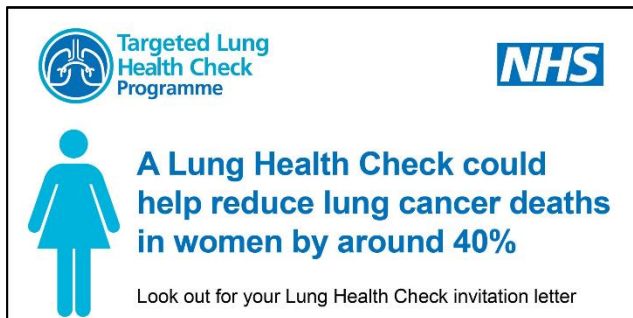
This can be found as a separate document. This document is also available as an Easy Read and in different languages if required.

On the right is the image of what to look for:



### Social media posts:

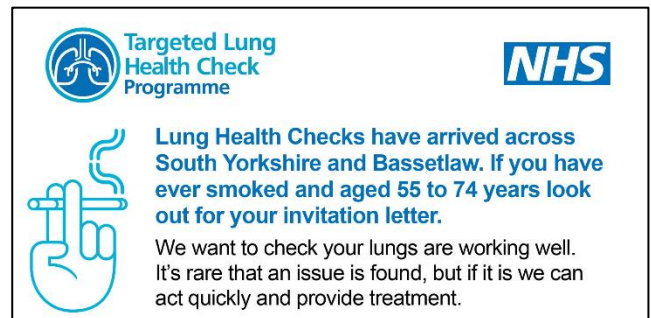
Please utilise these generic infographics (these could also be used on the TV screens in surgery). They are available to download from the same space you found this document, but here are some screenshots so you can visualise what's available to you:



Targeted Lung Health Check Programme **NHS**

**A Lung Health Check could help reduce lung cancer deaths in women by around 40%**

Look out for your Lung Health Check invitation letter



Targeted Lung Health Check Programme **NHS**

**Lung Health Checks have arrived across South Yorkshire and Bassetlaw. If you have ever smoked and aged 55 to 74 years look out for your invitation letter.**

We want to check your lungs are working well. It's rare that an issue is found, but if it is we can act quickly and provide treatment.




Targeted Lung Health Check Programme **NHS**

**7 in 10 lung cancer patients are currently diagnosed too late to be cured.**

A free NHS Lung Health Check can help find problems early and often before you notice anything is wrong.

**Catching Cancer Early Saves Lives.** Look out for your invitation letter



Targeted Lung Health Check Programme **NHS**

**A Lung Health Check could help reduce lung cancer deaths in men by around 26%**

Look out for your Lung Health Check invitation letter

Sample posts if helpful:

🔔 Have you been invited for a free NHS lung health check? 📧

You should have received an invitation and appointment in the post. If you need to change the date and time of your appointment, please call the number in the letter to rearrange.

In Doncaster, more than 17,000 people just like you have benefited from a free lung health check. Why not join them?

📘 The Lung Health Check Programme helps detect lung cancer earlier, as well as identifying other lung conditions.

To find out more visit [www.lunghealthchecks.co.uk](http://www.lunghealthchecks.co.uk)

#LungHealthChecksRotherham

---

---

🔔 Have you missed your appointment for your free NHS lung health check?

Don't worry, it's not too late. If you still have your invitation letter to hand ring the number enclosed to rearrange.

In Doncaster, more than 17,000 people just like you have benefited from a free lung health check. Why not join them?

To find out more visit [www.lunghealthchecks.co.uk](http://www.lunghealthchecks.co.uk)

#LungHealthChecksRotherham

---

---

### **Suggestions for reception staff / care navigators:**

It's not unusual for patients to think their letter is a scam, as the letter may be the first time they have heard about the programme. As a result, some patients may contact you for reassurance. Here are some suggestions of how you might do so, as well as endorse the programme:

*Yes, Mrs Mouse, we have heard about the Lung Health Check Programme and our GPs think it's a great opportunity. Your lungs work hard every minute of your life and as you get older, it's worth having them checked out. A Lung Health Check can help find problems early; often before you notice anything is wrong and at a stage when treatment could be simpler and more successful (ultimately saving more lives).*

*Hi, Mr Duck. Yes, it's a scheme running across South Yorkshire and Bassetlaw, and we have heard some excellent feedback from other patients about the service. We'd encourage you to consider the information you have been sent, as this describes what a*



*Lung Health Check is and the benefits of having a check, then keep the appointment you have been offered, or call the number enclosed to rearrange.*

With the nature of the joint roll out with Barnsley, it will take some time for the programme to reach every part of the borough. Even within a PCN cohort, patients will receive their invitations at different times. Here are some suggestions as to how you can manage queries from patients who have heard about the programme, but who may not have received an invitation yet:

*Hi, Miss Mouse, please don't worry. If you are eligible for the programme, you will receive an invitation in the post in due course. The programme is being rolled out across Rotherham and Barnsley between autumn 2022 and spring 2024, and the areas of greatest need are prioritised. When the programme reaches your practice, eligible patients will be prioritised by age so that those approaching 75 don't miss out. Invitations will be sent out over a period of time rather than all at once.*

*\*a guide to roll out timescales can be found on p1 of this guide.*

#### **Videos:**

Two films have been produced featuring local LHC attendees who share their journey from invitation through to outcome, which are incredibly useful to watch. If possible, we suggest any staff who may come into contact with patients take just a few minutes to watch these:

[Programme introduction from Dr Jason Page and Barry's story](#)

[Sandra's story](#)

#### **Useful Contacts:**

Clare Glazebrook, Lung Health Check Programme Manager  
[clare.glazebrook@nhs.net](mailto:clare.glazebrook@nhs.net)

Alison Thorp, Lung Health Check Project Manager  
[alison.thorp2@nhs.net](mailto:alison.thorp2@nhs.net)

Hannah Young, Lung Health Check Programme Communications and Engagement Officer  
[h.young11@nhs.net](mailto:h.young11@nhs.net)

**For service issues or general  
patient queries:**

**Patient Contact Number, Ashfield  
01302 495145**