

## Public Agenda

Title of Meeting:	<b>Rotherham Place Board: Partnership Business</b>
Time of Meeting:	9.00am – 10.00am
Date of Meeting:	Wednesday 18 October 2023
Venue:	Elm Room, Oak House, Moorhead Way, Bramley, S66 1YY
Chair:	Chris Edwards/Sharon Kemp
Contact for Meeting:	Lydia George: <a href="mailto:lydia.george@nhs.net">lydia.george@nhs.net</a> Wendy Commons: <a href="mailto:wcommons@nhs.net">wcommons@nhs.net</a>

Apologies:	R Jenkins, The Rotherham NHS Foundation Trust
Conflicts of Interest:	
Quoracy:	No Partnership Business shall be transacted unless the following are present as a minimum: a) one Member from each of the ICB and RMBC; and b) two Members from any of the following Partners: TRFT, VAR, RDASH or RPCLG

Item		Time	Pres By	Encs
1	<b>Public &amp; Patient Questions:</b> <i>The Chair will take questions in writing prior to meetings and will try to respond during the meeting. However, there may be occasions when a response has to be issued in writing afterwards. This being the case, responses will be published as an item for information at the next meeting.</i>		Chair	Verbal
<b>Business Items</b>				
2	Maternity, Children & Young People's Update	20 mins	Helen Sweaton	Enc 2
3	Rotherham Winter Plan	20 mins	Claire Smith	Enc 3
4	Feedback from Integrated Care Partnership Meeting	5 mins	Cllr David Roche	Verbal
<b>Standard Items</b>				
5	Communication to Partners	5 mins	Chair	Verbal
6	Draft Minutes and Action Log from Public Place Board from 20 September 2023 – <i>for approval</i>	5 mins	Chair	Enc 6i/6ii
7	Risks and Items for escalation to appropriate board (e.g. <i>Health &amp; Wellbeing Board, ICB Board</i> )		Chair	Verbal
8	Future Items: <ul style="list-style-type: none"> <li>• Primary Care Update</li> </ul> Standing Items: <ul style="list-style-type: none"> <li>• Transformation &amp; Enabling Group Updates</li> <li>• Achievements</li> <li>• Feedback from SY ICP Meeting – Bi-Monthly</li> <li>• Bi-Monthly Place Partnership Newsletter</li> </ul>			
9	Dates of Next Meeting: Wednesday <b>15 November 2023</b> at 9 –10am			

## GLOSSARY

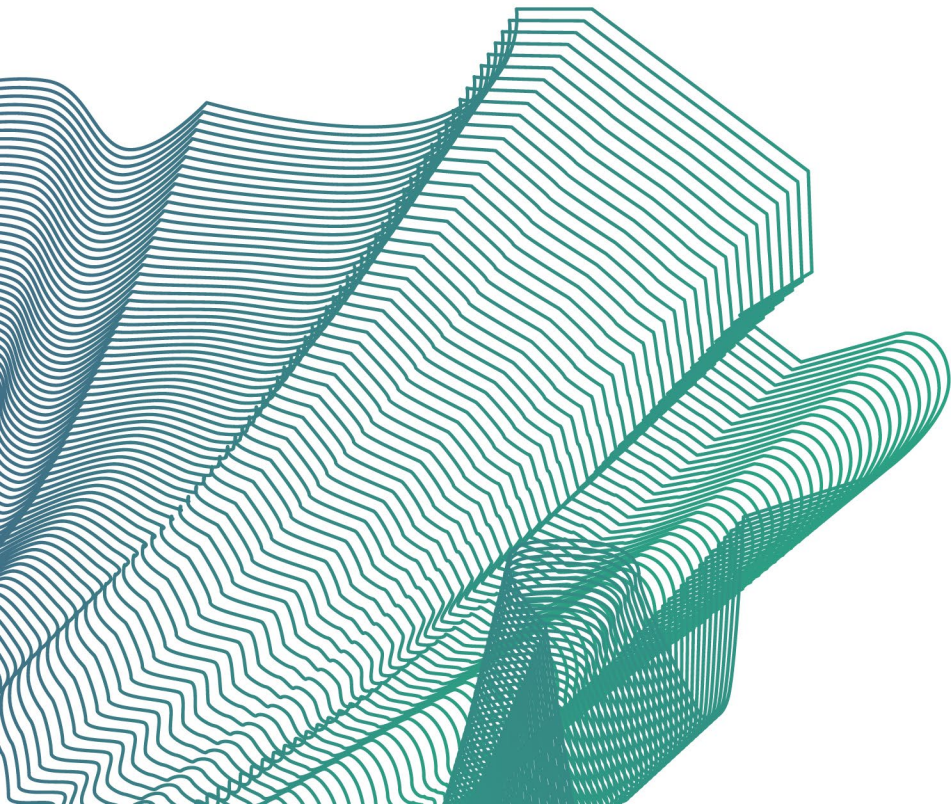
<b>A&amp;E</b>	Accident and Emergency
<b>BAME</b>	Black Asian and Minority Ethnic
<b>BCF</b>	Better Care Fund
<b>C&amp;YP</b>	Children and Young People
<b>CAMHS</b>	Child and Adolescent Mental Health Services
<b>CHC</b>	Continuing Health Care
<b>COI</b>	Conflict of Interest
<b>CQC</b>	Care Quality Commission
<b>DES</b>	Direct Enhanced Service
<b>DTOC</b>	Delayed Transfer of Care
<b>EOLC</b>	End of Life Care
<b>FOI</b>	Freedom of Information
<b>H&amp;WB</b>	Health and Wellbeing
<b>IAPT</b>	Improving Access to Psychological Therapies
<b>ICB</b>	Integrated Care Board
<b>ICP</b>	Integrated Care Partnership
<b>ICS</b>	Integrated Care System
<b>IDT</b>	Integrated Discharge Team
<b>JFP</b>	Joint Forward Plan
<b>JSNA</b>	Joint Strategic Needs Assessment
<b>KPI</b>	Key Performance Indicator
<b>KLOE</b>	Key Lines of Enquiry
<b>LAC</b>	Looked After Children
<b>LeDeR</b>	Learning Disability Mortality Review
<b>LES</b>	Local Enhanced Service
<b>LIS</b>	Local Incentive Scheme
<b>LOS</b>	Length of Stay
<b>LTC</b>	Long Term Conditions
<b>MMC</b>	Medicines Management Committee
<b>MOU</b>	Memorandum of Understanding
<b>NHS LTP</b>	NHS Long Term Plan
<b>NHSE</b>	NHS England
<b>NICE</b>	National Institute for Health and Care Excellence
<b>OD</b>	Organisational Development
<b>PCN</b>	Primary Care Network
<b>PTS</b>	Patient Transport Services
<b>QIA</b>	Quality Impact Assessment
<b>QIPP</b>	Quality, Innovation, Productivity and Performance
<b>QOF</b>	Quality Outcomes Framework
<b>RDaSH</b>	Rotherham Doncaster and South Humber NHS Foundation Trust
<b>RHR</b>	Rotherham Health Record
<b>RLSCB</b>	Rotherham Local Safeguarding Childrens Board
<b>RMBC</b>	Rotherham Metropolitan Borough Council
<b>RPCCG</b>	Rotherham Primary Care Collaborative Group
<b>RTT</b>	Referral to Treatment
<b>SEND</b>	Special Educational Needs and Disabilities
<b>SIRO</b>	Senior Information Risk Officer
<b>TRFT</b>	The Rotherham NHS Foundation Trust
<b>UECC</b>	Urgent and Emergency Care Centre
<b>VAR</b>	Voluntary Action Rotherham
<b>VCS</b>	Voluntary and Community Sector
<b>VCSE</b>	Voluntary, Community and Social Enterprise sector
<b>YAS</b>	Yorkshire Ambulance Service

# ROTHERHAM

ROTHERHAM PLACE PARTNERSHIP | HEALTH AND SOCIAL CARE

## Rotherham Place Board

Ensuring the Best Start in Life: Maternity, Children and Young People



**South Yorkshire**  
Integrated Care Board

**Rotherham, Doncaster  
and South Humber**  
NHS Foundation Trust

**The Rotherham**  
NHS Foundation Trust

Rotherham   
Metropolitan  
Borough Council



 **CONNECT  
HEALTHCARE**  
ROTHERHAM CIC

# What's working well

- Priorities, Milestones and Metrics agreed.
- Governance arrangements in place.
- Re-developed Children and Young People's Partnership Board provides excellent opportunity for voice and Influence
- Priorities aligned to ICP Bold Ambitions

CYPS Milestone Update



■ Complete ■ In progress ■ Delayed ■ Not started ■ Not achieved

## Highlights:

- CAMHs LAC pathway in place
- Accessibility strategy launched and first round of funding applications being considered
- Start for life pack including robust digital offer in development

# Challenges and Risks

- Impact of the financial climate on transformation and innovation
- Delays to milestone implementation
  - Development of a framework to support consistent aspirations for children and young people's SEMH across the continuum with appropriate support identified, a workforce competency framework and workforce development framework and a communications plan.
  - Re-development and implementation of our therapeutic offer to looked after children, in-house foster carers/ residential care providers.

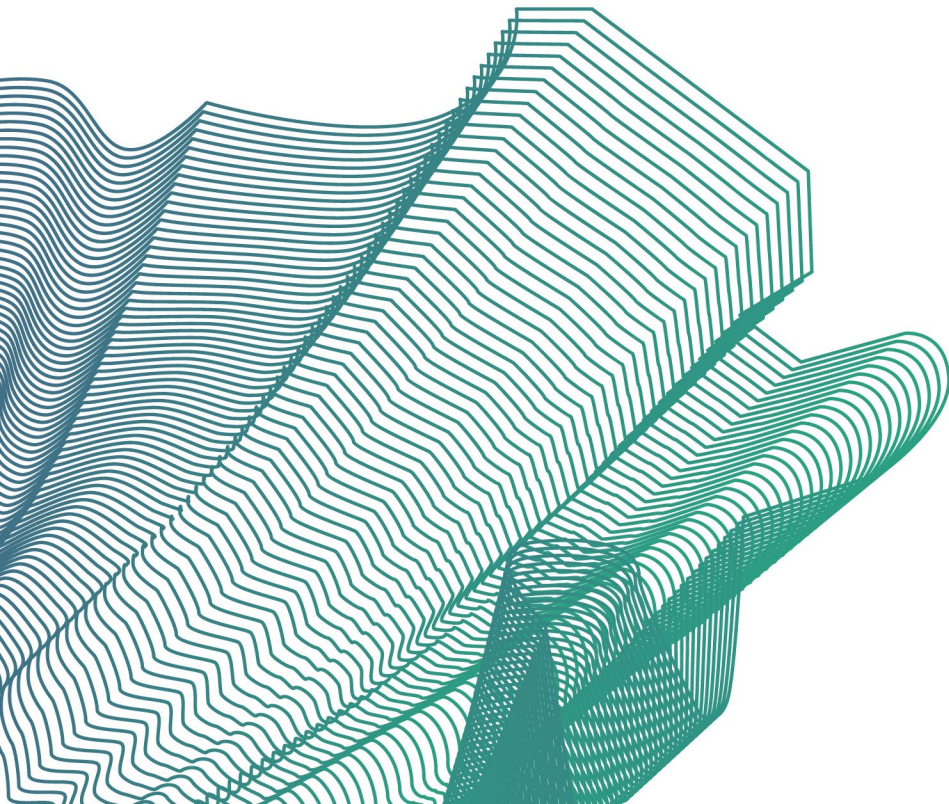
# What needs to happen next

- Embed the Breastfeeding friendly Borough Declaration through the delivery of Breastfeeding Friendly initiatives Q4 2023/24
- Review the Child Development Centre to ensure children in Rotherham will have timely access to an assessment and intervention when developmental needs are identified. Q4 2023/24
- Re-develop, implement, and embed a tiered sleep pathway. Q4 2023/24
- Actively engage in recruitment activity to increase the number of foster carers. Q4 2023/24
- Ensure children and young people with SEND and their families have access to accurate and relevant information on the Local Offer (strengthening our foundations). Q4 2023/24
- Produce a mental health transition pathway to support effective transition for looked after children and care leavers with SEMH needs. Q4 2023/24
- Maximise the use of the Rotherham Health Record to provide a 'health passport' to support transition from paediatric to adult services. Q4 2023/24
- Implement and embed preparation for adulthood guidance, including involving families in transition planning. Q4 2023/24

# ROTHERHAM

ROTHERHAM PLACE PARTNERSHIP | HEALTH AND SOCIAL CARE

# Rotherham Place Board Winter Planning October 2023



**South Yorkshire**  
Integrated Care Board

**Rotherham, Doncaster  
and South Humber**  
NHS Foundation Trust

**The Rotherham**  
NHS Foundation Trust

**Rotherham**  
Metropolitan  
Borough Council 



 **CONNECT  
HEALTHCARE**  
ROTHERHAM CIC

# Introduction

- Developed in collaboration with all Place partners
- Based on 2022 de-brief and learning from previous years
- Agreed through the Urgent Emergency Care Board



# What Worked Well in 2022-23

- Place winter plan developed in collaboration with all partners, aligned to Urgent and Emergency Care priorities
- Strong relationships with agreed escalation to executive level for assurance
- More integrated multi-disciplinary working to manage flow
- Additional senior support on site
- Point of care testing in the emergency department
- Extended hours eg discharge lounge, transport, pharmacy
- Surge capacity for paediatrics
- Acute escalation wheel and command centre

# What we learned in 2022-3

Learning Point	Mitigation for 2023-4
Seasonal pressures came earlier than anticipated with worst impact prior to Christmas	National scenario plans including projections from the Southern Hemisphere have informed planning processes
Difficult to recruit to temporary roles	The Rotherham NHS Foundation Trust have recruited to year round posts where proven. Some roles substantively recruited to at risk, otherwise flexible options used such as additional hours
Bed capacity was a challenge	Virtual ward beds opened, additional general, and acute/surge beds planned as well as community residential surge/spot purchase beds
Bedded use of assessment units	Plans in place to protect these areas
Consistency of Schemes	Joint planning to ensure schemes work together, eg where one service has extended hours this needs to be aligned with other services and communicated. Joint health and social care information pack being developed

# Planning: What's different in brief 2023-24

## Health and Social Care in the acute hospital

- Re-introduction of the 4 hour standard
- Ambulance hand over delays improvement plan
- Additional social workers to support the front door for admission avoidance and discharge
- Additional General & Acute beds and additional surge beds phased implementation
- Additional patient transport crew Mon – Fri 2 – 10 pm Nov – March
- Protect Same Day Emergency Services, electives and orthopaedic pathways
- Senior role to support electives and cancer pathways
- New MRI scanner in place for cancer patients, reducing waiting times
- Breast pain cancer pathway in place to filter to correct clinic and reduce two week waits

# Planning: What's different in brief 2023-24 (2)

## Health and Social Care in the Community

- Introduction of the virtual ward (5 beds Dec 22) capacity for 60 from October 23
- Development of the Urgent Community Response offer
- Development of the PUSH model with Yorkshire Ambulance Service to avoid unnecessary conveyances including a Rothercare enabler and additional transport
- Temporary resource for community nurse to support in-reach, therapy locum and additional support worker hours
- Implementation of the Integrated Transfer of Care Hub
- Additional reablement hours
- Hospital at home service commissioned
- Trusted assessor pilots to support out of area discharges and timely discharge to care homes
- Continuation of 15 residential surge beds at Lord Hardy Court, with spot purchase beds to better meet individual needs/complexity

# Planning: What's different in brief 2023-24 (3)

## Primary Care

- Primary care will run at full core capacity, with primary care hub for additional appointments, freeing up PCNs to support more complex cases (Dec 23 – Feb 24)
- Flu and Covid vaccinations for patients delivered as a system using PCN/place footprint for delivery
- Enhanced access to primary care including increase reception capacity and cloud telephony
- Early additional recruitment taking place for additional seasonal staffing. Use of NHS professionals to support staff sickness.

## Children and Young People

- Multi-agency silver working group meeting weekly to monitor key pressures
- CYPs Crisis & Intensive Community Support Team will engage to provide risk assessment/care/treatment to avoid re-presentation at UECC
- Self help support and wider public health information will be promoted
- The Me in Mind Teams will work intensely with schools to support resilience and provide early intervention where children and young people are showing the early sign of emotional distress.

# Planning: What's Different at Place

## **Mental Health**

- Support for crisis beds
- Improved access to support including for those who have attempted suicide
- Expansion of safe space crisis drop in
- Role out of mental health awareness training
- Focus on patient flow with new mental health escalation framework

## **Voluntary and Community Sector**

- Continuation of Voluntary Action Rotherham Urgent and Emergency social prescriber pilot for admission avoidance and discharge
- Continuation of You Ask We Respond personal health budget pilot to support timely discharge
- Re-prioritisation of Age UK hospital aftercare service including non personal care and access to low level equipment

## **System**

- Community escalation wheel to enable whole system view of system pressures
- Agreed approach to winter and system exceptionality meetings
- Communications plan across Place including support for cost of living crisis

# What are the key challenges

- Impact of industrial action including mitigation planning and recovery
- System challenges – capacity to focus on developing and embedding new ways of working
- Cost of living pressures
- Demand, complexity of patients and delayed discharges impacting on performance at times of pressure
- Maintaining an elective programme
- Risk of Covid surges potentially impacting on bed base /staff availability
- Workforce challenges : sickness, morale, and mental health

# Next steps

- Implement winter schemes, including urgent and emergency recovery plan and additional resource
- Complete home from hospital tender process
- Set up primary care hub
- Continue with roll out of trajectories: general and acute beds, virtual ward, urgent community response



**DRAFT**

<b>Minutes</b>	
<b>Title of Meeting:</b>	<b>PUBLIC</b> Rotherham Place Board: Partnership Business
<b>Time of Meeting:</b>	9.00am – 10.15am
<b>Date of Meeting:</b>	Wednesday 20 September 2023
<b>Venue:</b>	Elm Room, Oak House, Bramley, S66 1YY
<b>Chair:</b>	Sharon Kemp
<b>Contact for Meeting:</b>	Lydia George: lydia.george@nhs.net/ Wendy Commons: wcommons@nhs.net
<b>Apologies:</b>	Wendy Allott, Chief Financial Officer - Rotherham, NHS SY ICB Anand Barmade, Medical Director, Connect Healthcare Sue Cassin, Chief Nurse - Rotherham, NHS SY ICB Nicola Curley, Director of Childrens Services, RMBC Chris Edwards, Executive Place Director, NHS SY ICB Richard Jenkins, Chief Executive, The Rotherham Foundation Trust Gordon Laidlaw, Deputy Director of Communications, NHS SY ICB Toby Lewis, Chief Executive, RDaSH Cllr David Roche, H&WB Board Chair, RMBC Claire Smith, Deputy Place Director – Rotherham, NHS SY ICB Dr Neil Thorman, Executive GP Lead, RPCCB
<b>Conflicts of Interest:</b>	General declarations were acknowledged for Members as providers/commissioners of services. However, a specific declaration was made by Dr Jason Page in relation to Item 3 UECC Social Prescribing Project on the agenda (see minute).
<b>Quoracy:</b>	Confirmed as quorate.

**Members Present:**

Sharon Kemp (**SK**), Chairing, Chief Executive, Rotherham Metropolitan Borough Council (RMBC)  
Ben Anderson (**BA**), Director of Public Health, RMBC  
Shafiq Hussain (**SH**), Chief Executive, Voluntary Action Rotherham  
Dr Jason Page (**JP**), Medical Director, NHS SY ICB  
Julie Thornton (**JT**), Care Group Director (Roth), Rotherham, Doncaster & South Humber Foundation Trust  
Michael Wright (**MW**), Deputy Chief Executive, The Rotherham NHS Foundation Trust

**Participants:**

Lydia George (**LG**), Strategy & Delivery Lead - Rotherham, NHS SY ICB  
Shahida Siddique (**SS**), Independent Non-Executive Member, NHS SY ICB  
Steph Watt (**SW**), Joint Head of Commissioning, NHS SY ICB  
Andrew Clayton (**AC**), Head of Digital – Rotherham, NHS SY ICB,  
Barry Knowles (**BK**), Service Manager Social Prescribing, Voluntary Action Rotherham

**In Attendance:**

Wendy Commons, Support Officer, Rotherham Place, NHS SY ICB  
Leonie Wieser, Policy Officer, RMBC

**DRAFT**

Item Number	Discussion Items
<b>38/09/23</b>	<b>Public &amp; Patient Questions</b>
<p>There were no questions.</p>	
<b>39/09/23</b>	<b>Place Digital Update</b>
<p>AC outlined that work is progressing well with Rotherham Office of Data Analytics (RoDA) analytical work, social care project digitisation, the Place escalation wheel, robotic process automation in primary care, deploying the Accurx online consultation system and the digital capability framework study with the ICB workforce hub. Since the last update to Place Board, five projects have been completed and a further six are forecast for completion in September.</p> <p>The new platform of the Rotherham Health Record has been rolled out to all practices with increased usage now being seen across primary care and social care staff. Three council care homes will also begin using it following agreement of the data sharing model. The dataset for children’s services has been received which will allow work to commence.</p> <p>Just over 22% of the Rotherham population have registered to login to the Rotherham Health App and push notifications have been launched. Appointments are now live at PCN level offering appointments with a social prescribing link worker.</p> <p>Other areas making good progress included the launch of the tendering process for RDaSH Electronic Patient Record procurement; the TRFT patient hub and wayfinder programme; sharing GovRoam testing details with all partners and consideration of a shared site network at Riverside; the approval of the Digital Inclusion strategy, action plan with recruitment underway for support officers and the website is ready for launch; and work around population health interventions by profiling geographies and looking at benefits of environmental delivery by Rotherham Officer of Data Analysis.</p> <p>AC advised that the main risk to delivery of projects remains around workforce and recruitment which continue to be challenging in terms of resource and capacity.</p> <p>Next steps will include carrying out transfer of the functionality for the Rotherham Health App to the new South Yorkshire wide digital service for our public platform including piloting it on behalf of the integrated care system and determining social care use for the new platform; recruiting digital support officers, completing and launching the digital inclusion website and commencing support at TRFT and the community; and enabling access to the Yorkshire and Humber care record data via Rotherham Health Record, rolling out access to care homes and onboarding the children’s services dataset.</p> <p>Following an enquiry from the Chair about health app usage, AC confirmed that the Rotherham Health App offers more functionality and has the additionality for residents to booked GP extended access GP appointments directly making it well used.</p> <p>Place Board thanked AC for the update and congratulated him and his colleagues involved in the excellent progress being made at pace.</p>	
<b>40/09/23</b>	<b>Urgent &amp; Community Care Social Prescribing Project</b>
<p><i>Dr Jason Page declared a conflict of interest as a trustee in the Rotherham Community Trust. As this was an update for information and no decisions were being made, JP remained in the room for the presentation.</i></p>	

## DRAFT

Barry Knowles presented an update on social prescribing pilot which supports discharge at TRFT and is based in Woodside within the Integrated Discharge Team helping to assist discharge and reduce readmission.

Since the inception of the pilot in November 2022, there had been 255 referrals from various hospital teams into the project with 174 patients assessed by the social prescribing advisor. 67% of referred patients have engaged with social prescribing with 91% of patients reporting improved well-being at follow-up.

Almost 80% of those referred had benefitted from advocacy and support and befriending/enabling, benefits advice and counselling voluntary service pathways, but a number had also embraced the digital inclusion support and physical activity opportunities offered.

There has been some initial learning from the pilot so far which has shown that it takes time to build up social in the hospital environment and getting promotion and publicity right is important to ensure referral numbers fit with capacity as well as balancing the demands of MDT meetings with patient work.

Consideration will need to be given going forward to handling patients with complex needs and investment to increase the capacity in order to sustain social prescribing as part of discharge support and admission avoidance work.

BA said that this pilot demonstrated the importance of building evidence to support funding discussions and manage the continuity of this pathway which fits with the prevention and health inequalities priorities.

Members thanked BK for the update, supported the approach and acknowledged importance of continuing investment into voluntary sector.

### 41/09/23 Neurorehabilitation Update

SW outlined that the Rotherham neuro rehabilitation service consists of community beds, an outpatient's service and a community service that is available to people once medically fit.

The service supports people recovering from stroke, road traffic accidents, serious fall and other conditions or events that require intensive therapeutic, medical and nursing care to help them regain their optimum level of physical, cognitive, communicative, social behavioural function.

SW explained that from 1 August 2023, Rotherham, Doncaster and South Humber NHS Foundation Trust had become the new provider and employer of staff working within the service (instead of The Rotherham Foundation Trust).

Five community beds are provided in Magnolia Lodge in Doncaster. Community neuro nurses will still visit people in Rotherham, in their own homes or other settings and the therapy elements still take place at Park Rehabilitation in Rotherham.

Meetings had been held with RDaSH, TRFT and the ICB on project implementation, pathways, communications, IT and estate as well as an executive escalation meeting to provide guidance/decisions and ensure smooth transition.

Early learning to take forward is that all Rotherham Place partners across be engaged through regular stakeholder briefings where changes to health services are taking place to ensure that all relevant services are included in the service design and pathways.

**DRAFT**

It was acknowledged that in future, consideration should be given to highlight geographical moves and clearly explain the issues for patients in stakeholder engagement. A full evaluation of the transfer will take place in October 2023.

Place Board thanked SW for the update.

**42/09/23 Feedback from Integrated Care Partnership Meeting**

At the July meeting, there had been a presentation about the importance of cultural activity around health and wellbeing with a commitment made by all partners to ensure culture and sport is taken seriously.

ICP colleagues had taken on board the concerns raised by Rotherham representatives around governance issues. Solutions have been collectively agreed and the issues resolved successfully. The next meeting is being held in Doncaster on 27 September.

**43/09/23 Place Achievements**

RDASH colleagues had taken part in 'Wear it Green' mental health awareness day visiting Rotherham market specialist bazaar. The day was used to raise awareness of the resources available to local residents. Positive feedback was received and an invitation extended from market managers to re-visit again in the future.

**44/09/23 Rotherham Place Partnership Update**

Members received the latest edition for information which highlighted lung health checks, town centre transformation, medicines optimisation and Rotherham's virtual ward with a caseload currently of 46 patients.

Items suggested for the next edition included winter planning and building recovery in communities.

To publicise more widely, LG will include the Chair of RMBC's Communications Group in the circulation of future editions.

**45/09/23 Communications to Partners**

All agreed to continue to celebrate and share our achievements.

**46/09/23 Draft Minutes and Action Log from Public Place Board – 19 July 2023**

The minutes from the July meeting were agreed as a true and accurate record.

The action log was reviewed and noted as up to date.

**47/09/23 Risks and Items for Escalation to Health and Wellbeing Board**

None.

**48/09/23 Future Agenda Items:**

Standing Items

- Transformation and Enabling Group Updates
- Bi-Monthly Place Partnership Briefing
- Feedback from SY ICP Meetings – Bi Monthly
- Place Achievements

## DRAFT

<b>49/09/23</b>	<b>Date of Next Meeting</b>
The next meeting will take place on <b>Wednesday 18 October 2023</b> in Elm Room, Oak House from 9.00am – 10.00am.	

## Membership

Chris Edwards (Joint Chair)	Executive Place Director/ICB Deputy Chief Executive	NHS South Yorkshire Integrated Care Board
Sharon Kemp (Joint Chair)	Chief Executive	Rotherham Metropolitan Borough Council
Ben Anderson	Director of Public Health	Rotherham Metropolitan Borough Council
Richard Jenkins	Chief Executive	The Rotherham NHS Foundation Trust
Shafiq Hussain	Chief Executive	Voluntary Action Rotherham
Toby Lewis	Chief Executive	Rotherham, Doncaster and South Humber NHS Foundation Trust (RDaSH)
Dr Anand Barmade	Medial Director	Connect Healthcare Rotherham (GP Federation)
Dr Neil Thorman	Primary Care Representative	Rotherham Primary Care Collaborative Group

## Participants

Cllr David Roche	Joint Chair	Rotherham Health and Wellbeing Board
Claire Smith	Deputy Place Director, Rotherham Place	NHS South Yorkshire Integrated Care Board
Sue Cassin	Chief Nurse, Rotherham Place	NHS South Yorkshire Integrated Care Board
Dr Jason Page	Medical Director, Rotherham Place	NHS South Yorkshire Integrated Care Board
Wendy Allott	Chief Finance Officer, Rotherham Place	NHS South Yorkshire Integrated Care Board
Shahida Siddique	Independent Non-Executive Member	NHS South Yorkshire Integrated Care Board
Ian Spicer	Strategic Director, Adult Care, Housing and Public Health	Rotherham Metropolitan Borough Council
Nicola Curley	Director of Children's Services, RMBC	Rotherham Metropolitan Borough Council
Lydia George	Strategy and Delivery Lead	NHS South Yorkshire Integrated Care Board
Gordon Laidlaw	Head of Communications	NHS South Yorkshire Integrated Care Board
Michael Wright	Deputy Chief Executive	The Rotherham NHS Foundation Trust
Sally Kilgariff	Chief Operating Officer	The Rotherham NHS Foundation Trust
Julie Thornton	Care Group Director	Rotherham, Doncaster and South Humber NHS Foundation Trust (RDaSH)

PUBLIC ROTHERHAM PLACE BOARD ACTION LOG - 01 April 2023 - 31 March 2024

Mtg Date	Item No.	Agenda Item Title	Action Description	By	Action Status	Comments
20.9.23	<i>No Sept Actions to Note - All previous actions rated green</i>					